

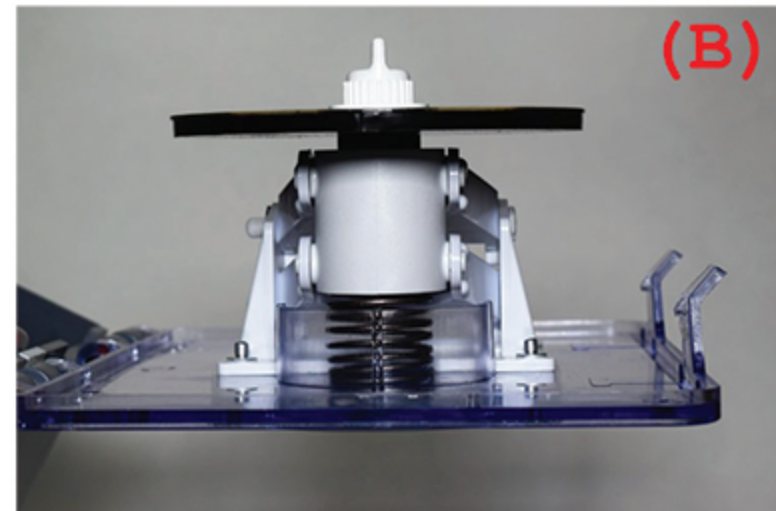
JFJ EYECON™ MINI INSTRUCTIONS

This machine is not designed to do game cube repairs

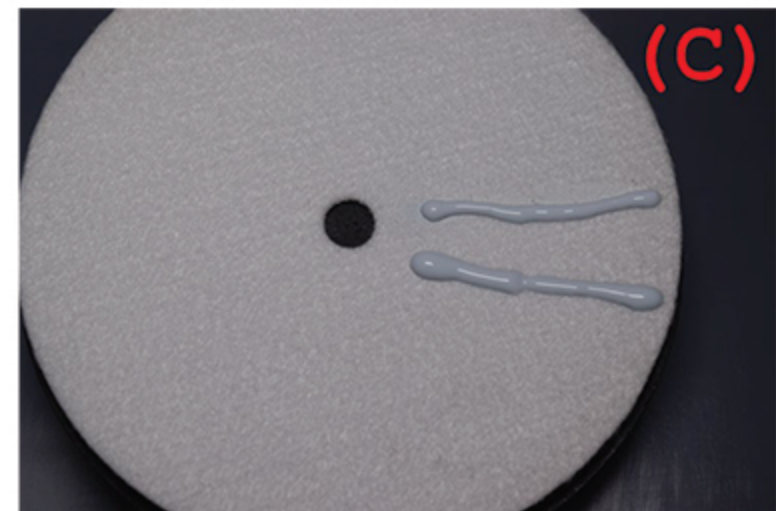
1. **(A)** Mount the CD by placing the label side of the disc against the glass plate. Tighten the nut to the arm to secure the disc to the plate.



2. After the CD has been tightened, make sure there is no gap caused by debris or a misplacing of the disc. The CD should be flat across the surface of the plate **(B)**. **NOTE:** When tightening the nut make sure that the thread does not get cross-threaded with the screw on the arm. This can cause the disc to crack, so you need to turn the disc a couple of times to make sure the nut is flat against the disc before starting the repair.



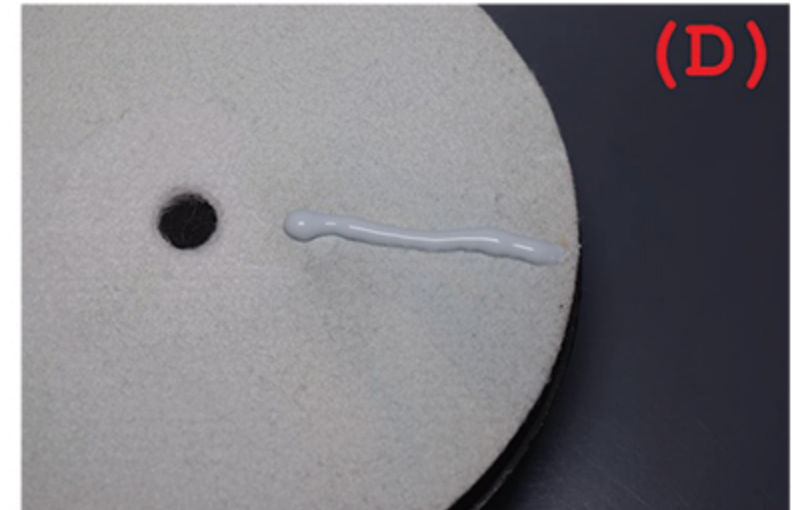
3. **(C)** Place the polishing pad flat into the pocket with the white side facing up. For the first and second use of the polishing pad, draw two lines of Poli-con horizontally on the pad at the area where the CD/DVD and pad touch. Do not smear or spread the Poli-con on the pad.



Note: For the first two times using a new polishing pad, only use it for a 15-second cycle.

Tip: When the pads are new and dry do 5-10 simple light repairs to warm up the pad and build up the Poli-con on the pad. After that the pad will be a lot more effective to remove deeper scratches.

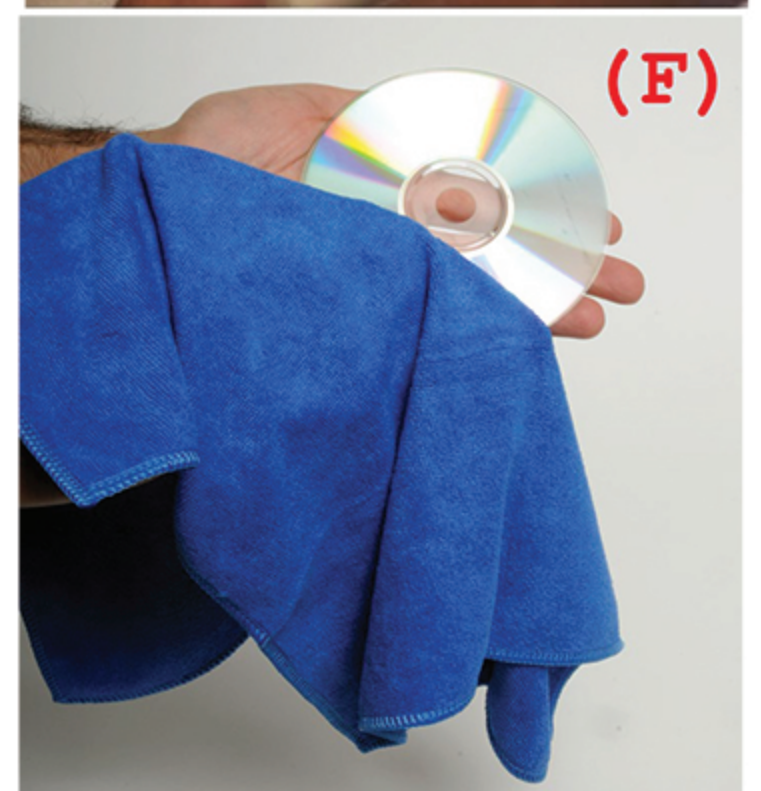
4. After using the polishing pad at least 2 times, you can reduce the amount of Poli-con for a 15-30 second cycle by adding one thinner line (D) of Poli-con, or two lines of Poli-con for a 45-60 second cycle. Add the Poli-con horizontally on the pad at the area where the CD/DVD and pad touch. **Note:** Poli-con is a concentrated formula, which is specially designed for you to use less.



5. For most scratches on Music CDs, CD-ROMs, Sony PlayStation and PlayStation 2 game discs, Microsoft X-box game discs, Nintendo Wii, DVD Movies, double-sided DVD, VCD, CDR, DVDR, XBX360, and HD DVDs, 15-seconds to 30-seconds will be enough time for repairing these discs. For repairing PlayStation 3, PlayStation 4, Xbox One, Wii U games, Blu-ray DVDs, 4K and Ultra HD (UHD) Blu ray, it is recommended to run a 45-second to 1-minute cycle, because of the different material of the disc.



6. When the CD/DVD finishes, lift it up from the edges with the tips of your fingers and then use the cloth to wipe the Poli-con from the CD/DVD. (E) **As an added but not necessary step**, put one puff of Poli-con Spray on the disc before wiping off the CD/DVD. This will help prevent the disc from getting minor scratches in the future.



Tip: (F) Do not use the edge of the cloth while wiping the disc or you will re-scratch the surface of the disc.

TIPS AND SUGGESTIONS

- As the Poli-con builds up on the polishing pad, the finish will get better and the pad will be more effective. **After 5-10 repairs** you will start to see the full effect of the repair with the pad.
- If the CD/DVD is severely scratched, you will need to use the polishing pad for 45-seconds to 1-minute. A CD/DVD with deep scratches/gouges, or circular lens gouges also known as the ring of death, may require the step to be repeated more than once. If it does, then you'll need to let the same disc sit a couple of minutes for every 2-3 minutes of spinning to prevent the disc from getting hot.
- A haze may form on the disc from continual use. If this happens, it means the pad is too hot and will need to cool down for a few minutes. Once the pad has cooled, repair the disc again to remove the haze.

Warning: If the 45-second or 1-minute cycle is constantly in use, the disc may get hot after several repairs. Please use **caution** and pick up the disc from the edges when removing from the glass plate. **TIP:** It is a good idea to have a spare pad to switch between in case one pad gets too hot. In addition, if you notice that the Poli-con is drying up on the disc that means the pad is too hot or needs to be washed.

Important: Peel the pad from the bottom to remove it from the machine. Peeling from the top white layer will ruin the pad.



- For maximum use of the pad and for best results, we recommend that you wash the pad after 200-250 repairs, or when the surface becomes sticky.

How to wash the pad: Hold the white layer of the pad under a slow stream of cold or warm water. With only your thumbs gently rub off any Poli-con build-up from the pad. **Note:** Make sure **not** to use your nails, a brush, or any other tool to clean the pad. After washing leave the pad out to dry overnight and use again the next day.

- When the bottle of Poli-con is finished, you will also need to replace the pad. We sell them together in kits with 1 or 2 pads.
- The Eyecon mini motor has a thermal protector in it, which will shut it down to prevent overheating. If the machine suddenly stops after constant use, the motor is too hot and needs to cool down for approximately 45-60 minutes.
- It is normal for the machine to make a rumbling noise for 2-3 seconds when first using the pad after it has been sitting for a day or more. When you are ready to use the machine again, add one line of Poli-con to the pad.
- **(H)** If you are experiencing any half-moon shaped scratches on your disc, there may be hairs sticking out from the pad that are causing them. You will need to trim the hairs on the edge of the pad with scissors.



***The JFJ Eyecon™ Mini machine is designed to be a 1-step repair for Blu-ray DVDs, however, for gouges and very deep scratches you may use the JFJ Easy Pro™ machine that has a sanding option. **Note:** Sanding with the Easy Pro machine, then buffing with the Eyecon machine **may not produce a good finish and is not recommended.**

All trademarks & logos are property of JFJ Eyecon™ & JFJ Easy Pro™